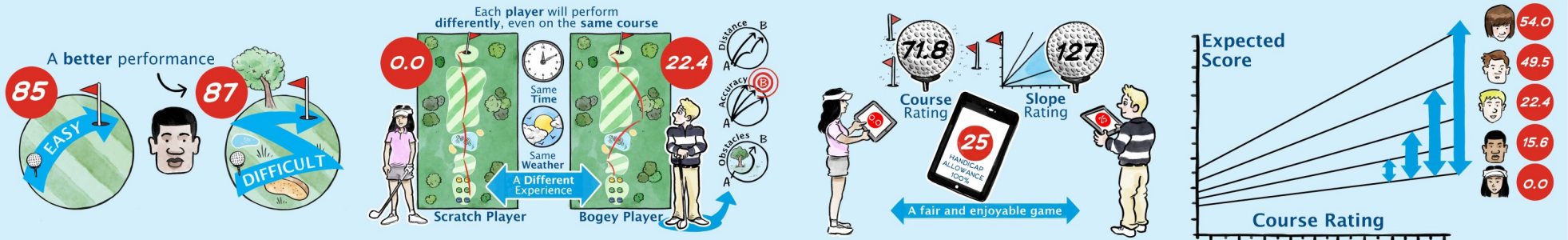
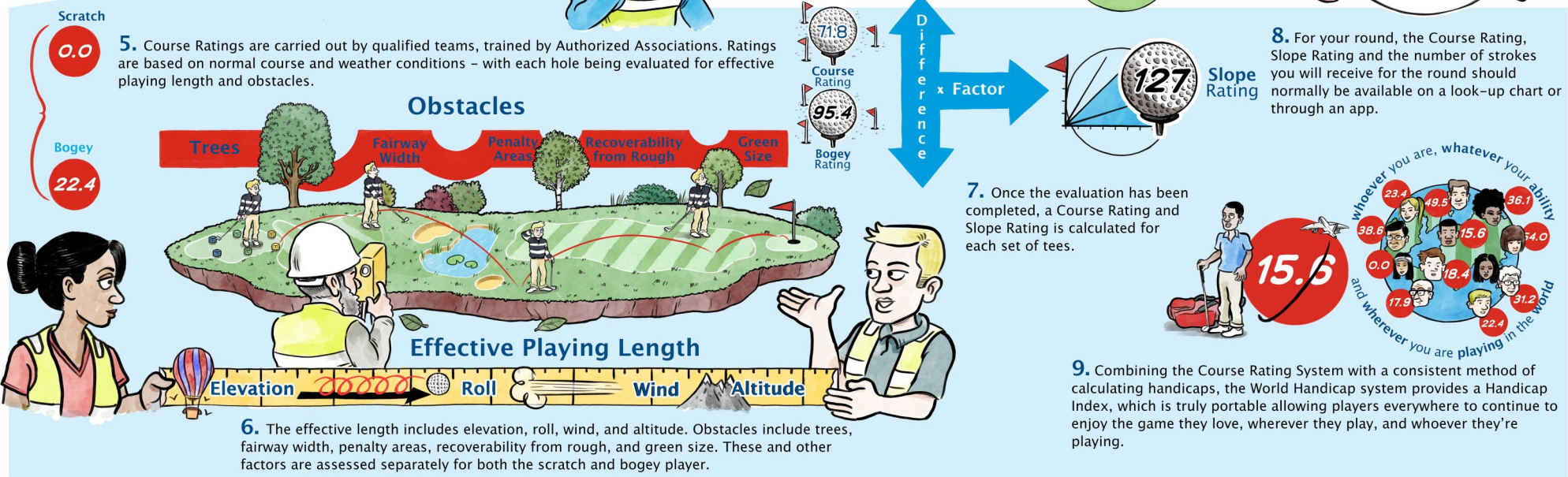


The Course Rating System – Relative playing difficulty of golf courses around the world



- No two golf courses play the same; a score of 87 on a difficult course might be a better performance than a score of 85 on an easy one.
- Each player will perform differently on the same course. A scratch player will have a different experience than a bogey player, with the bogey player generally finding more challenges with distance, accuracy and obstacles.
- The Course Rating and Slope Rating reflect this within the calculation of the Playing Handicap, enabling golfers of differing abilities to have a fair and enjoyable game.
- Course Rating reflects the playing difficulty under normal conditions for the scratch player; Slope Rating represents the difference in the playing difficulty for all players compared to the scratch player.



- Course Ratings are carried out by qualified teams, trained by Authorized Associations. Ratings are based on normal course and weather conditions – with each hole being evaluated for effective playing length and obstacles.
- Once the evaluation has been completed, a Course Rating and Slope Rating is calculated for each set of tees.
- For your round, the Course Rating, Slope Rating and the number of strokes you will receive for the round should normally be available on a look-up chart or through an app.
- Combining the Course Rating System with a consistent method of calculating handicaps, the World Handicap System provides a Handicap Index, which is truly portable allowing players everywhere to continue to enjoy the game they love, wherever they play, and whoever they're playing.